



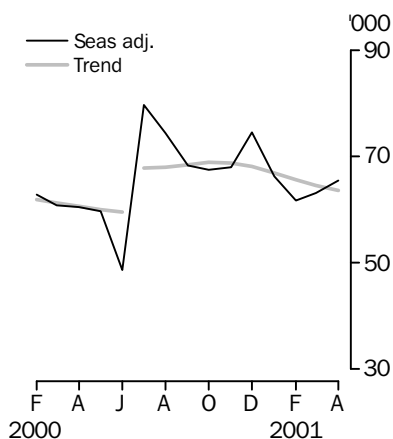
NEW MOTOR VEHICLE REGISTRATIONS

AUSTRALIA
PRELIMINARY

EMBARGO: 11:30AM (CANBERRA TIME) FRI 25 MAY 2001

New vehicle registrations

Total vehicles



APRIL KEY FIGURES

TREND ESTIMATES

| | Apr 2001 | % change Mar 2001 to Apr 2001 | % change Apr 2000 to Apr 2001 |
|---------------------------------------|----------|-------------------------------------|-------------------------------------|
| Total new motor vehicle registrations | 63 667 | -1.4 | .. |
| Passenger vehicles | 53 497 | -1.6 | .. |
| Other vehicles | 10 170 | -0.6 | .. |

SEASONALLY ADJUSTED

| | Apr 2001 | % change Mar 2001 to Apr 2001 | % change Apr 2000 to Apr 2001 |
|---------------------------------------|----------|-------------------------------------|-------------------------------------|
| Total new motor vehicle registrations | 65 471 | 3.5 | 8.2 |
| Passenger vehicles | 55 429 | 4.4 | 10.7 |
| Other vehicles | 10 042 | -1.2 | -3.6 |

ORIGINAL ESTIMATES

| | Apr 2001 | % change Mar 2001 to Apr 2001 | % change Apr 2000 to Apr 2001 |
|---------------------------------------|----------|-------------------------------------|-------------------------------------|
| Total new motor vehicle registrations | 57 300 | -15.3 | 13.9 |
| Passenger vehicles | 48 627 | -14.3 | 16.8 |
| Other vehicles | 8 673 | -20.2 | 0.1 |

APRIL KEY POINTS

TREND ESTIMATES

- The trend estimate for total new motor vehicle registrations fell by 1.4% in April 2001 compared with the previous month. This is the sixth month the trend has fallen since the strong growth in the second half of 2000 which followed the introduction of the new tax system. All States recorded falls in the trend during this period.

TAKE CARE!
Trend estimates are revised as new monthly data become available.

SEASONALLY ADJUSTED ESTIMATES

- The seasonally adjusted estimate for total new motor vehicle registrations rose by 3.5% in April 2001 compared with the previous month. Passenger vehicles rose 4.4% while other vehicles recorded a small decline of 1.2%.

ORIGINAL ESTIMATES

- Total new motor vehicle registrations fell by 15.3% in April 2001 compared with the previous month. Falls were recorded in all States and Territories with the exception of Northern Territory which recorded a substantial increase.

- For further information about these and related statistics, contact Yvonne Maynard on Brisbane 07 3222 6180, or the National Information Service on 1300 135 070.

NOTES

FORTHCOMING ISSUES

| <i>ISSUE</i> | <i>RELEASE DATE</i> |
|----------------|---------------------|
| May 2001 | 29 June 2001 |
| June 2001 | 27 July 2001 |
| July 2001 | 31 August 2001 |
| August 2001 | 28 September 2001 |
| September 2001 | 26 October 2001 |
| October 2001 | 30 November 2001 |



CHANGES IN THIS ISSUE

Percentage change figures have been included in Table 1.



TREND REVISIONS

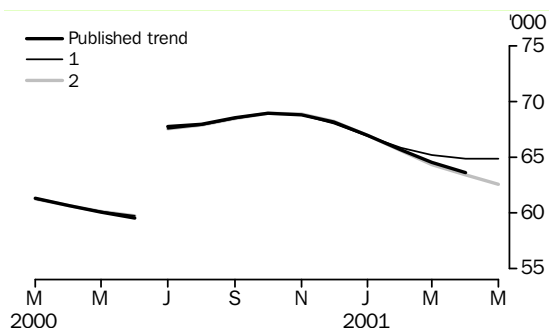
The most recent trend estimates are likely to be revised when new seasonally adjusted estimates become available.

The graph below presents the effect of two possible scenarios on the previous trend estimates:

- 1** The May seasonally adjusted estimate for total vehicle registrations is higher than the April seasonally adjusted estimate by 5.3%.
- 2** The May seasonally adjusted estimate for total vehicle registrations is lower than the April seasonally adjusted estimate by -5.3%.

The percentage change of 5.3% was chosen because the average absolute percentage change, based on the last 11 years, has been 5.3%.

TAKE CARE!
Trend estimates are revised as new monthly data become available.

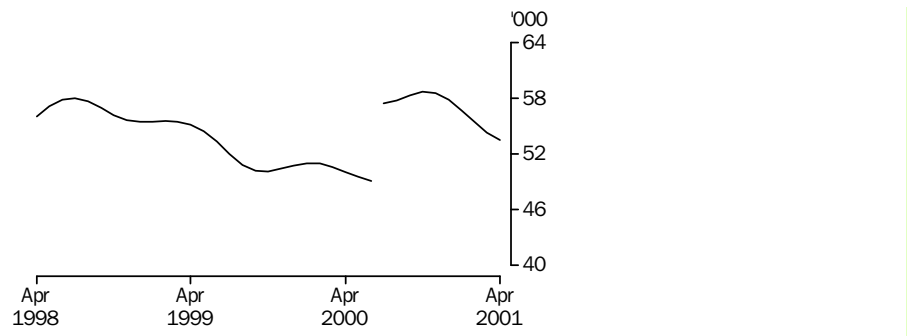


Dennis Trewin
Australian Statistician

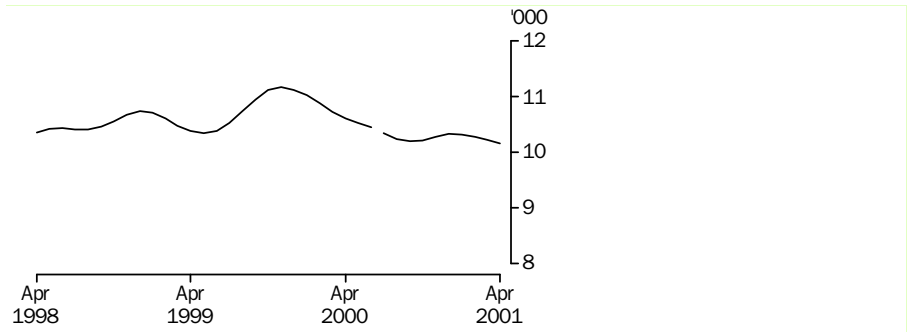


VEHICLE REGISTRATIONS BY TYPE: Trend series(a)

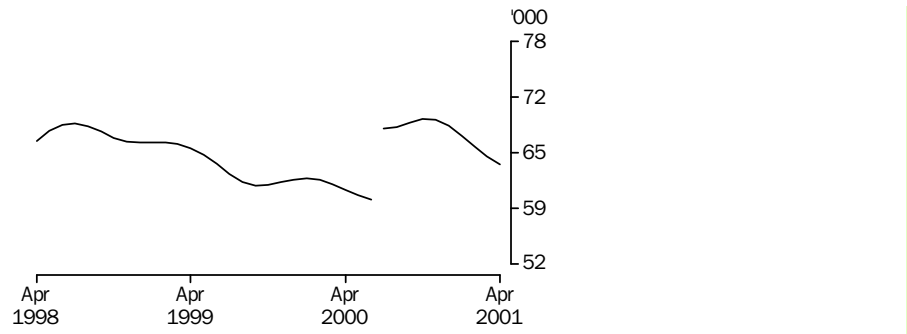
PASSENGER VEHICLES



OTHER VEHICLES



TOTAL VEHICLES (EXCLUDING MOTOR CYCLES)



(a) A break in the trend series occurred between June and July 2000 as a result of the introduction of the New Tax System.

NEW MOTOR VEHICLE, Registration By Type: All Series

| Month | NUMBER..... | | | CHANGE FROM PREVIOUS MONTH..... | | |
|---------------------|------------------------|--------------------|-----------|---------------------------------|------------------|---------|
| | Passenger vehicles no. | Other vehicles no. | Total no. | Passenger vehicles % | Other vehicles % | Total % |
| ORIGINAL | | | | | | |
| 2000 | | | | | | |
| February | 51 401 | 10 809 | 62 210 | 21.7 | 34.8 | 23.8 |
| March | 56 257 | 11 457 | 67 714 | 9.4 | 6.0 | 8.8 |
| April | 41 649 | 8 664 | 50 313 | -26.0 | -24.4 | -25.7 |
| May | 51 554 | 12 585 | 64 139 | 23.8 | 45.3 | 27.5 |
| June | 45 521 | 15 358 | 60 879 | -11.7 | 22.0 | -5.1 |
| July | 69 632 | 9 354 | 78 986 | 53.0 | -39.1 | 29.7 |
| August | 65 811 | 10 557 | 76 368 | -5.5 | 12.9 | -3.3 |
| September | 54 759 | 9 227 | 63 986 | -16.8 | -12.6 | -16.2 |
| October | 56 529 | 9 734 | 66 263 | 3.2 | 5.5 | 3.6 |
| November | 61 282 | 10 106 | 71 388 | 8.4 | 3.8 | 7.7 |
| December | 62 717 | 10 023 | 72 740 | 2.3 | -0.8 | 1.9 |
| 2001 | | | | | | |
| January | 46 985 | 8 158 | 55 143 | -25.1 | -18.6 | -24.2 |
| February | 49 281 | 9 345 | 58 626 | 4.9 | 14.6 | 6.3 |
| March | 56 765 | 10 863 | 67 628 | 15.2 | 16.2 | 15.4 |
| April | 48 627 | 8 673 | 57 300 | -14.3 | -20.2 | -15.3 |
| SEASONALLY ADJUSTED | | | | | | |
| 2000 | | | | | | |
| February | 51 921 | 10 991 | 62 912 | -4.3 | -3.6 | -4.2 |
| March | 50 435 | 10 403 | 60 838 | -2.9 | -5.3 | -3.3 |
| April | 50 074 | 10 417 | 60 491 | -0.7 | 0.1 | -0.6 |
| May | 48 821 | 10 873 | 59 694 | -2.5 | 4.4 | -1.3 |
| June | 37 610 | 10 985 | 48 595 | -23.0 | 1.0 | -18.6 |
| July | 70 133 | 9 547 | 79 680 | 86.5 | -13.1 | 64.0 |
| August | 63 915 | 10 572 | 74 487 | -8.9 | 10.7 | -6.5 |
| September | 58 129 | 10 171 | 68 300 | -9.1 | -3.8 | -8.3 |
| October | 57 434 | 10 160 | 67 594 | -1.2 | -0.1 | -1.0 |
| November | 58 145 | 9 844 | 67 989 | 1.2 | -3.1 | 0.6 |
| December | 63 825 | 10 756 | 74 581 | 9.8 | 9.3 | 9.7 |
| 2001 | | | | | | |
| January | 55 635 | 10 676 | 66 311 | -12.8 | -0.7 | -11.1 |
| February | 51 787 | 10 039 | 61 826 | -6.9 | -6.0 | -6.8 |
| March | 53 081 | 10 168 | 63 249 | 2.5 | 1.3 | 2.3 |
| April | 55 429 | 10 042 | 65 471 | 4.4 | -1.2 | 3.5 |
| TREND ESTIMATES (a) | | | | | | |
| 2000 | | | | | | |
| February | 50 964 | 10 884 | 61 848 | -0.1 | -1.3 | -0.3 |
| March | 50 581 | 10 732 | 61 313 | -0.8 | -1.4 | -0.9 |
| April | 50 065 | 10 610 | 60 675 | -1.0 | -1.1 | -1.0 |
| May | 49 572 | 10 528 | 60 100 | -1.0 | -0.8 | -0.9 |
| June | 49 123 | 10 449 | 59 572 | -0.9 | -0.8 | -0.9 |
| July | 57 478 | 10 343 | 67 821 | 17.0 | -1.0 | 13.8 |
| August | 57 760 | 10 244 | 68 004 | 0.5 | -1.0 | 0.3 |
| September | 58 349 | 10 198 | 68 547 | 1.0 | -0.4 | 0.8 |
| October | 58 735 | 10 213 | 68 948 | 0.7 | 0.1 | 0.6 |
| November | 58 587 | 10 277 | 68 864 | -0.3 | 0.6 | -0.1 |
| December | 57 841 | 10 332 | 68 173 | -1.3 | 0.5 | -1.0 |
| 2001 | | | | | | |
| January | 56 655 | 10 324 | 66 979 | -2.1 | -0.1 | -1.8 |
| February | 55 408 | 10 287 | 65 695 | -2.2 | -0.4 | -1.9 |
| March | 54 340 | 10 235 | 64 575 | -1.9 | -0.5 | -1.7 |
| April | 53 497 | 10 170 | 63 667 | -1.6 | -0.6 | -1.4 |

(a) A break in the trend series occurred between June and July 2000 as a result of the introduction of the New Tax System.

NEW MOTOR VEHICLES, Registrations By Type: **Original**

| Month | Passenger vehicles | Light commercial vehicles | Rigid trucks | Articulated trucks | Non-freight carrying trucks | Buses | Total (excludes motor cycles) | Motor cycles |
|-------------|-----------------------|---------------------------------|-----------------|-----------------------|-----------------------------------|-------|--|-----------------|
| 2000 | | | | | | | | |
| February | 51 401 | 9 102 | 997 | 278 | 69 | 363 | 62 210 | 2 604 |
| March | 56 257 | 9 585 | 1 176 | 288 | 56 | 352 | 67 714 | 2 945 |
| April | 41 649 | 7 127 | 968 | 198 | 58 | 313 | 50 313 | 2 518 |
| May | 51 554 | 10 625 | 1 348 | 196 | 61 | 355 | 64 139 | 2 770 |
| June | 45 521 | 13 170 | 1 354 | 193 | 113 | 528 | 60 879 | 2 259 |
| July | 69 632 | 7 508 | 1 047 | 485 | 62 | 252 | 78 986 | 2 842 |
| August | 65 811 | 8 689 | 1 138 | 331 | 90 | 309 | 76 368 | 3 125 |
| September | 54 759 | 7 436 | 1 057 | 297 | 148 | 289 | 63 986 | 3 008 |
| October | 56 529 | 7 969 | 1 164 | 288 | 76 | 237 | 66 263 | 3 177 |
| November | 61 282 | 8 234 | 1 179 | 299 | 105 | 289 | 71 388 | 3 423 |
| December | 62 717 | 8 402 | 1 001 | 221 | 124 | 275 | 72 740 | 2 819 |
| 2001 | | | | | | | | |
| January | 46 985 | 7 019 | 629 | 226 | 55 | 229 | 55 143 | 2 668 |
| February | 49 281 | 7 849 | 834 | 264 | 176 | 222 | 58 626 | 2 563 |
| March | 56 765 | 9 207 | 1 002 | 244 | 160 | 250 | 67 628 | 3 221 |
| April | 48 627 | 7 254 | 866 | 220 | 114 | 219 | 57 300 | 2 656 |

NEW MOTOR VEHICLES, Registrations By State: All series

| Month | New South Wales | Victoria | Queensland | South Australia | Western Australia | Tasmania | Northern Territory | Australian Capital Territory | Australia |
|---------------------|-----------------|----------|------------|-----------------|-------------------|----------|--------------------|------------------------------|-----------|
| ORIGINAL | | | | | | | | | |
| 2000 | | | | | | | | | |
| February | 22 131 | 16 613 | 11 056 | 3 868 | 5 784 | 992 | 587 | 1 179 | 62 210 |
| March | 23 819 | 17 530 | 13 245 | 3 994 | 6 189 | 1 128 | 659 | 1 150 | 67 714 |
| April | 17 781 | 12 964 | 9 572 | 2 900 | 4 627 | 937 | 611 | 921 | 50 313 |
| May | 22 781 | 16 487 | 12 061 | 3 896 | 5 843 | 1 126 | 760 | 1 185 | 64 139 |
| June | 21 062 | 15 074 | 12 968 | 3 663 | 5 097 | 1 059 | 897 | 1 059 | 60 879 |
| July | 27 323 | 21 037 | 15 649 | 4 616 | 7 360 | 1 205 | 555 | 1 241 | 78 986 |
| August | 27 024 | 19 878 | 14 357 | 4 538 | 7 086 | 1 472 | 701 | 1 312 | 76 368 |
| September | 20 908 | 17 197 | 12 122 | 4 138 | 6 386 | 1 545 | 590 | 1 100 | 63 986 |
| October | 22 095 | 18 629 | 12 428 | 4 241 | 5 978 | 1 241 | 601 | 1 050 | 66 263 |
| November | 24 062 | 19 859 | 12 948 | 4 534 | 6 610 | 1 436 | 614 | 1 325 | 71 388 |
| December | 23 547 | 20 942 | 13 362 | 4 649 | 6 407 | 2 035 | 601 | 1 197 | 72 740 |
| 2001 | | | | | | | | | |
| January | 18 657 | 15 045 | 10 214 | 3 436 | 5 286 | 1 041 | 432 | 1 032 | 55 143 |
| February | 20 007 | 15 940 | 11 129 | 3 637 | 5 482 | 996 | 430 | 1 005 | 58 626 |
| March | 23 000 | 17 537 | 13 479 | 4 169 | 6 460 | 1 195 | 583 | 1 205 | 67 628 |
| April | 19 165 | 15 807 | 10 912 | 3 668 | 5 048 | 925 | 726 | 1 049 | 57 300 |
| SEASONALLY ADJUSTED | | | | | | | | | |
| 2000 | | | | | | | | | |
| February | 22 332 | 16 665 | 11 250 | 3 920 | 5 672 | 1 213 | 646 | 1 214 | 62 912 |
| March | 21 470 | 15 526 | 11 869 | 3 662 | 5 535 | 1 187 | 536 | 1 053 | 60 838 |
| April | 21 189 | 15 993 | 11 246 | 3 518 | 5 516 | 1 270 | 640 | 1 119 | 60 491 |
| May | 20 655 | 15 756 | 11 294 | 3 779 | 5 336 | 1 108 | 636 | 1 130 | 59 694 |
| June | 17 117 | 12 014 | 9 882 | 2 858 | 4 156 | 1 068 | 633 | 867 | 48 595 |
| July | 26 736 | 21 604 | 15 396 | 4 697 | 8 218 | 1 156 | 631 | 1 242 | 79 680 |
| August | 27 425 | 18 682 | 14 076 | 4 370 | 6 760 | 1 327 | 684 | 1 163 | 74 487 |
| September | 22 634 | 18 105 | 13 336 | 4 303 | 6 741 | 1 328 | 675 | 1 178 | 68 300 |
| October | 22 151 | 18 870 | 12 973 | 4 358 | 6 225 | 1 253 | 634 | 1 130 | 67 594 |
| November | 22 673 | 18 548 | 13 177 | 4 176 | 6 217 | 1 390 | 595 | 1 213 | 67 989 |
| December | 25 234 | 21 186 | 13 688 | 4 688 | 6 423 | 1 393 | 742 | 1 227 | 74 581 |
| 2001 | | | | | | | | | |
| January | 22 114 | 19 108 | 11 775 | 4 333 | 5 886 | 1 311 | 553 | 1 231 | 66 311 |
| February | 20 996 | 16 646 | 11 828 | 3 784 | 5 729 | 1 282 | 494 | 1 067 | 61 826 |
| March | 21 401 | 16 243 | 12 605 | 3 936 | 6 087 | 1 309 | 493 | 1 175 | 63 249 |
| April | 21 244 | 18 580 | 12 426 | 4 158 | 5 913 | 1 210 | 721 | 1 219 | 65 471 |
| TREND ESTIMATES (a) | | | | | | | | | |
| 2000 | | | | | | | | | |
| February | 21 968 | 16 222 | 11 080 | 3 853 | 5 732 | 1 231 | 630 | 1 132 | 61 848 |
| March | 21 636 | 16 022 | 11 319 | 3 775 | 5 616 | 1 204 | 617 | 1 124 | 61 313 |
| April | 21 323 | 15 817 | 11 425 | 3 703 | 5 499 | 1 176 | 613 | 1 119 | 60 675 |
| May | 21 094 | 15 643 | 11 408 | 3 655 | 5 399 | 1 158 | 623 | 1 120 | 60 100 |
| June | 20 917 | 15 493 | 11 307 | 3 617 | 5 314 | 1 163 | 636 | 1 125 | 59 572 |
| July | 22 449 | 17 906 | 13 419 | 4 333 | 6 740 | 1 191 | 649 | 1 134 | 67 821 |
| August | 22 518 | 18 105 | 13 355 | 4 324 | 6 654 | 1 239 | 659 | 1 150 | 68 004 |
| September | 22 715 | 18 520 | 13 312 | 4 335 | 6 544 | 1 288 | 664 | 1 169 | 68 547 |
| October | 22 900 | 18 910 | 13 213 | 4 344 | 6 416 | 1 330 | 654 | 1 181 | 68 948 |
| November | 22 951 | 19 093 | 13 033 | 4 335 | 6 280 | 1 350 | 635 | 1 187 | 68 864 |
| December | 22 811 | 18 965 | 12 808 | 4 297 | 6 152 | 1 343 | 611 | 1 186 | 68 173 |
| 2001 | | | | | | | | | |
| January | 22 482 | 18 578 | 12 561 | 4 217 | 6 044 | 1 326 | 589 | 1 182 | 66 979 |
| February | 22 047 | 18 122 | 12 371 | 4 131 | 5 964 | 1 305 | 577 | 1 178 | 65 695 |
| March | 21 606 | 17 716 | 12 255 | 4 057 | 5 907 | 1 283 | 575 | 1 176 | 64 575 |
| April | 21 225 | 17 353 | 12 186 | 3 996 | 5 886 | 1 263 | 581 | 1 177 | 63 667 |

(a) A break in the trend series occurred between June and July 2000 as a result of the introduction of the New Tax System.

NEW PASSENGER VEHICLES, Top Make/models: **Original**—April 2001

| <i>Make/Model</i> | <i>New South Wales</i> | <i>Victoria</i> | <i>Queensland</i> | <i>South Australia</i> | <i>Western Australia</i> | <i>Tasmania</i> | <i>Northern Territory</i> | <i>Australian Capital Territory</i> | Australia |
|-------------------|------------------------|-----------------|-------------------|------------------------|--------------------------|-----------------|---------------------------|-------------------------------------|------------------|
| Holden | | | | | | | | | |
| Commodore/Calais | 2 202 | 2 025 | 1 182 | 600 | 574 | 73 | 146 | 126 | 6 928 |
| Astra | 606 | 596 | 268 | 103 | 149 | 26 | 3 | 60 | 1 811 |
| Vectra | 186 | 209 | 103 | 54 | 50 | 13 | 2 | 11 | 628 |
| Other | 381 | 324 | 210 | 73 | 98 | 19 | 6 | 9 | 1 120 |
| Total | 3 375 | 3 154 | 1 763 | 830 | 871 | 131 | 157 | 206 | 10 487 |
| Toyota | | | | | | | | | |
| Corolla | 599 | 625 | 332 | 104 | 234 | 30 | 26 | 31 | 1 981 |
| Camry/Vienta | 719 | 547 | 311 | 100 | 159 | 36 | 25 | 33 | 1 930 |
| Avalon | 302 | 422 | 216 | 45 | 55 | 3 | 5 | 16 | 1 064 |
| Other | 950 | 676 | 599 | 163 | 299 | 41 | 56 | 32 | 2 816 |
| Total | 2 570 | 2 270 | 1 458 | 412 | 747 | 110 | 112 | 112 | 7 791 |
| Ford | | | | | | | | | |
| Falcon/Fairmont | 992 | 1 326 | 738 | 226 | 225 | 35 | 26 | 63 | 3 631 |
| Laser | 235 | 262 | 154 | 96 | 73 | 35 | 3 | 13 | 871 |
| Escape | 77 | 48 | 30 | 21 | 13 | 4 | — | 2 | 195 |
| Other | 155 | 181 | 84 | 44 | 48 | 6 | 3 | 9 | 530 |
| Total | 1 459 | 1 817 | 1 006 | 387 | 359 | 80 | 32 | 87 | 5 227 |
| Mitsubishi | | | | | | | | | |
| Magna | 450 | 281 | 331 | 266 | 124 | 27 | 66 | 57 | 1 602 |
| Lancer | 342 | 368 | 300 | 87 | 144 | 19 | 11 | 41 | 1 312 |
| Pajero | 238 | 123 | 185 | 36 | 67 | 9 | 84 | 12 | 754 |
| Other | 363 | 171 | 166 | 76 | 49 | 12 | 7 | 38 | 882 |
| Total | 1 393 | 943 | 982 | 465 | 384 | 67 | 168 | 148 | 4 550 |
| Hyundai | | | | | | | | | |
| Accent | 712 | 382 | 357 | 124 | 310 | 47 | 22 | 26 | 1 980 |
| Lantra/Elantra | 204 | 151 | 103 | 40 | 118 | 26 | — | 9 | 651 |
| Santa Fe | 92 | 77 | 40 | 12 | 49 | 6 | 1 | 6 | 283 |
| Other | 110 | 98 | 81 | 22 | 73 | 3 | 1 | 5 | 393 |
| Total | 1 118 | 708 | 581 | 198 | 550 | 82 | 24 | 46 | 3 307 |
| Nissan | | | | | | | | | |
| Pulsar | 571 | 390 | 313 | 66 | 117 | 25 | 16 | 42 | 1 540 |
| Patrol | 169 | 137 | 167 | 34 | 94 | 11 | 9 | 9 | 630 |
| SX Coupe | 85 | 80 | 48 | 20 | 9 | 3 | 2 | 5 | 252 |
| Other | 147 | 140 | 99 | 16 | 31 | 3 | 2 | 7 | 445 |
| Total | 972 | 747 | 627 | 136 | 251 | 42 | 29 | 63 | 2 867 |
| Mazda | | | | | | | | | |
| 323 | 367 | 235 | 146 | 47 | 59 | 13 | 3 | 24 | 894 |
| Tribute | 235 | 172 | 112 | 38 | 43 | 15 | 2 | 13 | 630 |
| 626 | 99 | 88 | 57 | 18 | 20 | 2 | — | 6 | 290 |
| Other | 215 | 124 | 85 | 27 | 25 | 9 | 6 | 12 | 503 |
| Total | 916 | 619 | 400 | 130 | 147 | 39 | 11 | 55 | 2 317 |

EXPLANATORY NOTES

INTRODUCTION

- 1** This publication presents monthly data for registrations of new motor vehicles.
- 2** The statistics in this publication use the Vehicle Identification Number (VIN), adopted by the State and Territory motor vehicle registration authorities. The information contained in the VIN allows more accurate classification of vehicles. In the case of some States, data processed using the VIN system are not strictly comparable with data processed prior to December 1990.

SCOPE AND COVERAGE

- 3** Motor vehicle registration statistics are obtained from State and Territory motor vehicle registration authorities. The statistics reflect information recorded in registration documents. With the exception of Queensland, the statistics do not depart significantly from actual registrations during the period. In the case of Queensland, a number of registrations processed in a month actually relate to vehicles registered prior to that month.
- 4** New motor vehicle registrations are obtained from New South Wales, Victoria, Queensland and Western Australia registration authorities on a weekly basis. Other registries provide data for each calendar month. The ABS processes the weekly registration data provided for the above-mentioned States and includes data for the relevant month in this publication. Data referring to the next month are withheld and included in the next month's publication. In some months, the ABS processes five weeks of data for the above States, while other months include four weeks of data. In months where five weeks of data are processed and depending on the actual pattern of registration processing, it is possible that there will be a greater number of registrations recorded because the carry forward from the previous month is likely to be greater than the carry over to the next month.
- 5** The scope of the statistics:
 - includes:
 - passenger vehicles
 - light commercial vehicles
 - trucks
 - buses
 - motorcycles (note: not included in totals)
 - vehicles with diplomatic and consular plates
 - State and Commonwealth owned vehicles
 - excludes:
 - vehicles belonging to the defence forces
 - recreation vehicles such as trail bikes and sand dune buggies (in those States where registration is required).

SEASONAL ADJUSTMENT

- 6** Seasonal adjustment is a means of removing the estimated effects of normal seasonal variation from the series so that the effects of other influences can be more clearly recognised.
- 7** Seasonal adjustment does not remove from the series the effect of irregular or non-seasonal influences (e.g. the introduction of new models, processing delays, industrial disputes).

EXPLANATORY NOTES

SEASONAL ADJUSTMENT

continued

8 Irregular influences that are highly volatile can make it difficult to interpret the series even after adjustment for seasonal variation.

9 Extreme care should be exercised in using the seasonally adjusted series for new motor vehicle registrations in Tasmania, the Northern Territory and the Australian Capital Territory. The small numbers and volatile nature of these data makes reliable estimation of the seasonal pattern very difficult.

10 Seasonally adjusted series are calculated for the 'Passenger vehicles', 'Other vehicles' and 'Total vehicles' series for each State and Territory and are aggregated to obtain the total for Australia.

11 Seasonal adjustment factors are analysed and revised as necessary annually.

TREND ESTIMATES

12 The smoothing of seasonally adjusted series to create trend estimates reduces the impact of the irregular component of the seasonally adjusted series. The trend estimates are derived by applying a 13-term Henderson-weighted moving average to the respective seasonally adjusted series. These trend series are used to analyse the underlying behaviour of the series over time.

13 While this smoothing technique enables trend estimates to be produced for the latest month, it does result in revisions to the trend estimates for the most recent months as data for subsequent months become available. Generally subsequent revisions become smaller and after three months, usually have a negligible impact on the series. Changes in the original data and re-estimation of seasonal factors may also lead to revisions to the trend. For more information, see *A Guide to Interpreting Time Series—Monitoring 'Trends'—an Overview* (Cat. no. 1348.0) or contact the Assistant Director, Time Series Analysis on 02 6252 6345.

RELATED PUBLICATIONS

14 For a more detailed break-up of the monthly figures presented here, enquiries should be made to Yvonne Maynard on 07 3222 6180 or to any ABS office. Additional statistics, including registrations of trailers and caravans, are also available in the Special Data Service, *New Motor Vehicle Registrations, Australia* (9303.0.40.003). Data on total vehicle registrations are published annually in *Motor Vehicle Census, Australia, 31 October 1997* (Cat. no. 9309.0).

SYMBOLS AND OTHER USAGES

. . . not applicable

n.p. not available for publication, but included in totals.

G L O S S A R Y

| | |
|------------------------------------|--|
| Articulated trucks | Vehicles constructed primarily for load carrying consisting of a prime mover having no significant load carrying area but with a turn table device which can be linked to a trailer. With or without a trailer the gross combination mass will be 3.5 tonnes or more. |
| Buses | Vehicles constructed for the carriage of passengers. Included are all passenger vehicles with 10 seats or more, including the driver's seat. |
| Light commercial vehicles | Describes goods carrying vehicles less than 3.5 tonnes gross vehicle mass. Included are utilities, panel vans, cab-chassis and forward control vehicles (whether four-wheel drive or not). |
| Motor cycles | Includes 2 and 3 wheeled mopeds, scooters, motor tricycles and motor cycles with side cars. |
| Non-freight carrying trucks | Includes specialist vehicles such as ambulances, mobile cranes or vehicles fitted with special purpose equipment and having no goods carrying capacity. |
| Passenger vehicles | Includes cars, station wagons, four-wheel drive passenger vehicles and forward control passenger vehicles with up to nine seats (including the driver). |
| Registrations | This includes all registrations processed by the motor vehicle registration authorities in the States and Territories during the relevant period. |
| Rigid trucks | Vehicles constructed primarily for load carrying with a gross vehicle mass of 3.5 tonnes or more. |
| VIN | The Vehicle Identification Number (VIN) uniquely identifies each vehicle. Embedded in the number are details of make and model together with other relevant information about the vehicle. The VIN is collected by the motor vehicle registration authorities at the time of registration. |

FOR MORE INFORMATION...

- INTERNET* **www.abs.gov.au** the ABS web site is the best place to start for access to summary data from our latest publications, information about the ABS, advice about upcoming releases, our catalogue, and Australia Now—a statistical profile.
- LIBRARY* A range of ABS publications is available from public and tertiary libraries Australia-wide. Contact your nearest library to determine whether it has the ABS statistics you require, or visit our web site for a list of libraries.
- CPI INFOLINE* For current and historical Consumer Price Index data, call 1902 981 074 (call cost 77c per minute).
- DIAL-A-STATISTIC* For the latest figures for National Accounts, Balance of Payments, Labour Force, Average Weekly Earnings, Estimated Resident Population and the Consumer Price Index call 1900 986 400 (call cost 77c per minute).

INFORMATION SERVICE

Data which have been published and can be provided within five minutes are free of charge. Our information consultants can also help you to access the full range of ABS information—ABS user-pays services can be tailored to your needs, time frame and budget. Publications may be purchased. Specialists are on hand to help you with analytical or methodological advice.

- PHONE* **1300 135 070**
- EMAIL* **client.services@abs.gov.au**
- FAX* 1300 135 211
- POST* Client Services, ABS, GPO Box 796, Sydney 1041

WHY NOT SUBSCRIBE?

ABS subscription services provide regular, convenient and prompt deliveries of ABS publications and products as they are released. Email delivery of monthly and quarterly publications is available.

- PHONE* 1300 366 323
- EMAIL* subscriptions@abs.gov.au
- FAX* 03 9615 7848
- POST* Subscription Services, ABS, GPO Box 2796Y, Melbourne 3001



2930100004012
ISSN 1323-4528

RRP \$17.00

© Commonwealth of Australia 2001

Produced by the Australian Bureau of Statistics